



Bletchingley Players
present

On Golden Pond
by Ernest Thompson

This amateur production is presented by arrangement with Joset Weinberger Ltd

April 24th, 25th & 26th 2003

The action of the play takes place – in the present – in the living room of a summer home on Golden Pond, in Maine, USA.

On Golden Pond by Ernest Thompson

CAST in order of appearance

Norman Thayer Jnr.	John Tomlin
Ethel Thayer	Di Brooke
Charlie Martin	Craig Phelan
Chelsea Thayer Wayne	Felicity Lund
Billy Ray Jnr.		Danny Holme
Bill Ray		Ian Seath

Directed and produced by – Liz Tomlin

Stage Manager – Cyril Mighall

Lighting & Sound – Rodney Bain

Continuity – Barbara Saunders

Properties Mistress – Eileen Shore

Properties Assistant – Jeney Bennett

Set design – Cyril Mighall

Stage construction: John Gent, Sean Phelan,

Jeremy Lund, Alan West

Backdrop: Marian Buck

Publicity: Joanna Scott

Front of House Manager

& Box Office: Susan Sarti

Bar Manager: Renate Butler

Thanks go to all the other front of house and backstage helpers involved in this production.



Booking Form



On Golden Pond

...and Fish'n'Chip Supper

April 24th, 25th & 26th

Date	Number of tickets @ £10	Sen. Citizen tickets @ £8	TOTAL COST
Thursday Apr 24th at 8.00 pm			
Friday Apr 25th at 8.00 pm			
Saturday Apr 26th at 8.00 pm			

Last bookings: Tuesday 22nd April.

Postal applications to: Bletchingley Players Box Office,
1 Manor Road
Merstham RH13LT
Tel: 01737 646225

Please send a stamped addressed envelope with all postal applications

Please send me tickets as above:

I enclose a cheque for £_____ (made payable to Bletchingley Players)

Name:

Address:

Telephone:(Daytime)(Evenings)



On Golden Pond

by Ernest Thompson

*This amateur production is presented by arrangement
with Josef Weinberger Ltd*

April 24th, 25th & 26th 2003

Tickets include Fish & Chip Supper

Bar available through the evening

8pm Bletchingley Village Hall

Tickets £10

(£8 for Pensioners)

Tel: 01737 646225

BOOKING FORM OVERLEAF

ABOUT THE PLAY

This is the tender love story of Ethel and Norman Thayer, who are returning to their summer home on Golden Pond, in Maine, USA for the 44th year. He is a retired professor, nearing eighty, with heart palpitations and a failing memory – but still as tart-tongued, observant and eager for life as ever. Ethel, 10 years younger, and the perfect foil for Norman, delights in all the small things which have enriched, and continue to enrich, their long life together.

They are visited by their divorced daughter, Chelsea, and her dentist fiancé, who then go off to Europe, leaving his teenage son behind for the summer. The boy quickly becomes the grandchild the elderly couple have longed for, and as Norman revels in taking his ward fishing and thrusting good books at him, he also learns some lessons about modern teenagers. The play is full of humour as well as pathos. You may have seen the film of the play, which starred Katharine Hepburn and Henry Fonda. It was the last film Fonda made before he died.

Streaks Ahead

92 High Street, Bletchingley

Ladies and Gentlemen's Hair Studio

- ♦ ORGANIC COLOURS AND PERMS
- ♦ CREATIVE CUTS
- ♦ COLOURING A SPECIALITY
- ♦ HIGHLIGHTS / LOWLIGHTS
- ♦ INDIAN HEAD MASSAGE
- ♦ HAIR EXTENSIONS
- ♦ CHILDRENS CUTS
- ♦ BARBERING

BRIDAL AND SPECIAL OCCASION HAIR

SPECIAL RATES FOR SENIOR CITIZENS

BEAUTY THERAPIST AVAILABLE WEDNESDAY AND FRIDAY (Tel: 07880 584 625)

Phone for an appointment 01883 744467

AWARD WINNING
FARM SHOP
AND PLANT CENTRE
COFFEE SHOP



MOUNTAINBOARDING
FISHING / CORPORATE
HOSPITALITY /
ADVENTURE ACTIVITIES

In the Farm Shop -

Free cookery demonstrations on the last Saturday of each month
In The Granary above the Shop at 10.30, 12.30 & 2.30

And at the Plant Centre -

trees, shrubs, roses, herbaceous perennials and water plants
& the Coffee Shop for a rest & refreshments!



Priory Farm, Sandy Lane, Nutfield, Surrey, RH1 4EJ. Tel. No. 01737 823340

Bletchingley Players

Bletchingley Players (formerly BADS – Bletchingley Amateur Dramatic Society) have been entertaining village audiences for more than 40 years.

Productions have been wide-ranging – straight drama, comedy, farce and even pantomime. The *Players* now boast some of the largest audiences in the area, regularly selling out on Friday and Saturday nights, with patrons enjoying what has now become a tradition... fish and chips in the interval.

The last couple of years have been good ones for the group. Despite our rehearsal hut – owned by Surrey County Council – being condemned after a series of vandal attacks, we were extremely lucky to acquire the former Scout Hut on Grange Meadow which has now become our permanent headquarters and rehearsal studio.

It is certainly a cut above our old premises with heating, toilets and a small kitchen. We even have hot and cold running water. The only running water in our previous premises was that which ran down the walls when it rained.

We have been also enjoyed a boost in membership and would like to welcome those new members involved in their first production with Bletchingley Players.

Mostly, however, we would like to thank you, our audiences, for your loyal and continued support. We hope you enjoy this production of *On Golden Pond* and look forward to seeing you again very soon.

If you are interested in any aspect of drama – acting, directing, stage management, front of house, and would like to be involved, please give me a call. I'd be delighted to hear from you.

John Tomlin
Chairman
01883 743194

On Golden Pond – The cast



John Tomlin has appeared in two previous productions for *Blethingley Players* – *Blithe Spirit* and *The Peacocks Must Go*. John does, however, enjoy producing, and has six plays to his credit here – including *The Odd Couple* by Neil Simon and his lesser-known comedy *Last of the Red Hot Lovers*. John is currently chairman of the Players, and works as a publisher in London.

Di Brooke has played parts in all age ranges, but after her last role with *Blethingley Players* (Madame Arcarti in *Blithe Spirit*), she thought another suitable character would be unlikely. Then along came Ethel, who considers growing old is one of the disadvantages of long life. But, says Di, the opportunity to play her, under Liz Tomlin's direction, has turned out to be a happy advantage.



Craig Phelan is a newcomer to *Blethingley Players*, but he is no stranger to stage performance. While studying for his A-levels he performed in Ibsen's *Ghosts*, Chekov's *Three Sisters*, and *Trelawney of the Wells* by Arthur Wing Pinero. He also co-devised a piece to re-enact a Greek myth for children. His last performance was in the Tennessee Williams classic *Cat on a Hot Tin Roof* at St Bede's College.



Felicity Lund first stepped on stage aged four as a rabbit, and has been hooked ever since. Having gained valuable experience at Croydon Youth Theatre Organisation, she joined the *Players* over 25 years ago and has enjoyed roles in comedy, farce, pantomime and tense drama. She made her directorial debut with *Blythe Spirit* in 2000 and looks forward to directing *Blethingley Players'* October production



Danny Holme is a pupil at Caterham School where he enjoys music, English, drama and art. Danny plays the piano and is working towards Grade 4. This is his first production with the *Players*, but he is also a member of several other groups with which he has performed, including Surrey County Theatre Group, the National Music Theatre and the Youth Showchoir of London.

Ian Seath joined the *Players* two years ago having never acted before. He has been in two productions – *The Peacocks Must Go* playing Jonty, and *Last of the Red Hot Lovers*, the Neil Simon comedy where he took the lead role of Barney Cashman. Ian says that he wishes he had discovered acting years ago as it is so rewarding and fulfilling.



Director/Producer



Liz Tomlin has been involved in the world of theatre for more years than she cares to remember. Previously a member of Croydon Stagers and the Miller Centre, Liz joined *Blethingley Players* five years ago. Our audiences, however, will be more used to seeing Liz on stage rather than in the role of director, as she has had a variety of parts in nearly every play since joining.

Stage Manager/set designer

Cyril Mighall spent two years at the Central School of Art before working in the studio at an advertising agency creating press and television advertising, display exhibition and stand design. He also worked on model making and prototypes. All this experience proved invaluable when Cyril joined the *Players* some years ago – producing special effects then as set designer and stage manager.



Travel, Safari, Cruise and Beach Clothing



**TRAVELLING
LIGHT**

Come and visit our Bletchingley shop
Everything for men and women visiting hot countries

Smart, comfortable clothes made in England
from best quality fabrics

30 High Street, Bletchingley
Telephone 01883 743456

HOWARD CUNDEY & COMPANY

www.howardcunley.com



OLD FORGE,
HIGH STREET.
01883 743400

*Estate Agents and Valuers
established in
Bletchingley Village
since 1977
— open 7 days a week*



Rage

HAIRDRESSING

16 GODSTONE ROAD
CATERHAM CR3 6RA
01883 331200

Su Saunders and Sons welcome you to

WILLIAM IV

*Unspoilt Victorian Pub, Traditional Food and Real Ales
Non-smoking Restaurant*

*Little Common Lane, Bletchingley, Surrey RH11 4QF
Telephone 01883 743 278*



Longhurst

Proprietor: SUE LENNAN
46 High Street
Bletchingley
Surrey

- NEWSAGENTS • STATIONERS •
- TOBACCONISTS • CONFECTIONERY • TOYS • GIFTS •
- HABERDASHERY •
- DRY CLEANING •
- CHEMIST'S SUNDRIES •
- SUB POST OFFICE • ESSENTIAL GROCERIES AND
FROZEN FOODS



AUCTIONEERS LIMITED

Norfolk House, High Street, Bletchingley, Surrey RH1 4PA
Tel: 01883 743323

AUCTION

29th, 30th April & 1st May 2003

Millers
pub & restaurant

2 HIGH STREET, BLETCHINGLEY, Nr REDHILL
SURREY RH1 4PE

TEL: 01883 743711 FAX: 01883 740598

Directions: From the M25 Heathrow, take the B2235. Follow the signs for Godstone. Once in Godstone follow the signs for Redhill along the Bletchingley Road, Millers is on the right hand side

The Red Lion

Castle Street, Bletchingley
Surrey RH1 4NU
Tel: 01883 743342

Your hosts:

Harry and Marion Stokes

HOME COOKED FOOD

Evenings

Tues – Sat 7-9pm

Every Lunchtime

12-2pm

Sunday Lunches

Nestledown

KENNELS

*Home of the Cuvana Cockers and
Irish Water Spaniels.*

Arnold Hempstead

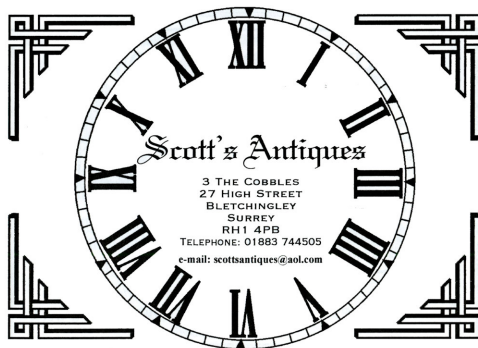
Small Select Boarding Kennels
& Cattery.

Eastbourne Rd A22, Blindley Heath,
Nr. Lingfield, Surrey RH7 6LG

Tel: Kennel: 01342 834558

Home: 01883 730185

Mobile: 07889 542 846



Whyte Harte Hotel



Traditional pub food and bar snacks
served all day

Oak Inn lunch £4.95
weekdays

Two main courses for the
price of one
all day Monday
(except bank holidays)

Home cooked Sunday roast
Morning coffee

Tel: 01883 743296

COMPUTERS FOR
HOME OR OFFICE
Printers, Monitors,
new or second user,
Computer health check



020 8655 3359

Put an
end to
FLAT
ROOF
problems

THE
FLAT ROOF
COMPANY



We only work on flat roofs...
EVERYDAY!!



THE FLAT ROOF COMPANY CRAWLEY
5 Easter Way, South Godstone, Godstone, Surrey RH9 8HG
Tel: 01342 894 555

Website: www.flatroof.co.uk

PRINCIPAL: SEAN CARTY



*Bletchingley
Players*
present

On Golden Pond

by Ernest Thompson

*This amateur production is presented by arrangement
with Josef Weinberger Ltd*

April 24th, 25th & 26th 2003

at Bletchingley Village Hall

On Golden Pond

by Ernest Thompson

CAST in order of appearance

Norman Thayer Jnr.	John Tomlin
Ethel Thayer	Di Brooke
Charlie Martin	Craig Phelan
Chelsea Thayer Wayne	Felicity Lund
Billy Ray Jnr.		Danny Holme
Bill Ray		Ian Seath

Directed and produced by – Liz Tomlin

Stage Manager – Cyril Mighall

Lighting & Sound – Rodney Bain

Continuity – Barbara Saunders

Properties Mistress – Eileen Shore

Properties Assistant – Jeney Bennett

Set design – Cyril Mighall

Stage construction: John Gent, Sean Phelan,

Jeremy Lund, Alan West

Backdrop: Marian Buck

Publicity: Joanna Scott

Front of House Manager

& Box Office: Susan Sarti

Bar Manager: Renate Butler

Thanks go to all the other front of house and backstage
helpers involved in this production.

Booking Form



On Golden Pond

...and Fish'n'Chip Supper

April 24th, 25th & 26th

Date	Number of tickets @ £10	Sen. Citizen tickets @ £8	TOTAL COST
Thursday Apr 24th at 8.00 pm			
Friday Apr 25th at 8.00 pm			
Saturday Apr 26th at 8.00 pm			

Last bookings: Tuesday 22nd April.

Postal applications to: Bletchingley Players Box Office,
1 Manor Road
Merstham RH13LT
Tel: 01737 646225

Please send a stamped addressed envelope with all postal applications

Please send me tickets as above:

I enclose a cheque for £_____ (made payable to Bletchingley Players)

Name:

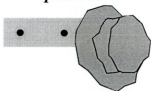
Address:

Telephone:(Daytime)(Evenings)

Bletchingley Players



present



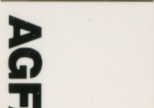
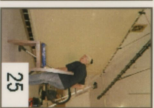
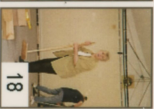
On Golden Pond

by Ernest Thompson

*This amateur production is presented by arrangement
with Josef Weinberger Ltd*



April 24th, 25th & 26th 2003



On Golden Pond



*Felicity Lund
(Chelsea)*



*Di Brooke
(Ethel)*



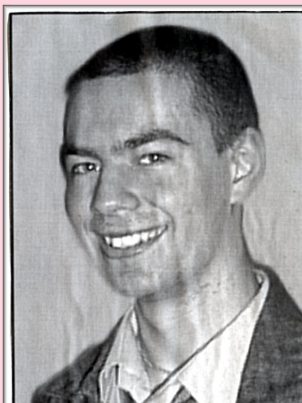
*John Tomlin
(Norman)*



*Danny Holme
(Billy)*



*Ian Seath
(Bill)*



*Craig Phelan
(Charlie)*



*Rodney Bain
Lighting and Sound*



*Liz Tomlin
Director/Producer*



*Cyril Mighall
Stage Manager*