

Bletchingley
Players

present



The UK amateur PREMIER of

A large, vibrant red lipstick smudge graphic, oriented vertically, positioned behind the word 'Graduate' in the title.

**The
Graduate**

As adapted for the stage by
TERRY JOHNSON

Bletchingley Village Hall
October 18th, 19th & 20th 2007



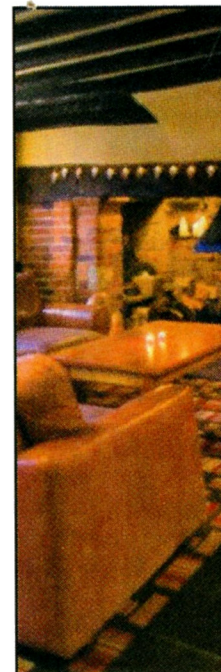
POSH CHOCS & BEST WISHES

UNDER NEW OWNERSHIP

Morning Coffees	See our new menu	Gift wrapped "Posh" Chocolates
Light Lunches	See our new take away menu	Chocolates by post
Afternoon Teas		
Wedding Favours		Gifts:
Handmade Greetings Cards		Posh Jams & Marmalades
Greeting Cards		Norfolk Lavender Products
Gift wrappings		Stationery

25 HIGH STREET
BLETCHINGLEY
SURREY
RH1 4PB

TEL: 01883 743931
FAX: 01883 743931
E-MAIL: poshchocs.b@btinternet.com
WEBSITE: www.poshchocs.co.uk



01883 743231

Whyte Harte Hotel

11-21 High Street
Bletchingley
Surrey
RH1 4PB

The Whyte Harte invites you to join us for our locals night where you can enjoy any of our main courses for £7
Hope to see you all

The Whyte Harte Team

We reserve the right to terminate this offer without notice. Offer limited to Tuesday only, & not in conjunction with any other promotion



APHRODITE BRIDES



charming, intimate boutique
chic, stylish
& contemporary gowns

Sample Sale
Special prices on selected samples

86 High Street, Bletchingley,
Redhill, Surrey RH1 4DA
tel: 01883 743293

karen@aphrodite-brides.co.uk
<http://www.aphrodite-brides.co.uk>



Longhurst

46 High Street
Bletchingley
Surrey

- NEWSAGENTS • STATIONERS •
- TOBACCONISTS • CONFECTIONERY • TOYS • GIFTS •
- HABERDASHERY •
- DRY CLEANING •
- CHEMIST'S SUNDRIES •
- SUB POST OFFICE • ESSENTIAL GROCERIES AND FROZEN FOODS • LOTTERY

Scenes

Act 1

Scene 1

Benjamin's bedroom

Scene 2

Benjamin's bedroom –
nine days later

Scene 3

The lobby of the Taft Hotel

Scene 4

A bedroom at the Taft Hotel

Scene 5

A bedroom at the Taft Hotel –
two months later

Scene 6

A downtown street corner

Scene 7

A tacky nightclub

—————
I N T E R V A L
—————

Act 2

Scene 1

The Robinson's living room –
early morning

Scene 2

The Robinson's living room –
evening

Scene 3

The Braddock's front lawn

Scene 4

An attic room in a Berkeley
boarding house

Scene 5

An attic room in a Berkeley
boarding house –
next morning

Scene 6

A psychiatrist's study

Scene 7

The vestry of a church

Scene 8

A motel room

director



liz tomlin

This is Liz's third directorial production for Bletchingley Players, having previously produced *On Golden Pond* and *Pygmalion*, but she says she much prefers acting to directing and recent roles with Bletchingley Players have included Mrs Birling in *An Inspector Calls* and M'Lynn in *Steel Magnolias*.

However, having agreed to undertake this autumn's production she handed three different scripts to stage director Cyril Mighall to see which of the plays he felt he could stage with the limited facilities at the village hall.

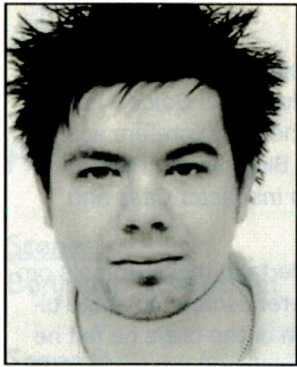
Bearing in mind that we have no wing space, no flying facility for scenery, and the stage has to be built and the lighting rigged from scratch for every play, she didn't for a moment imagine that Cyril would be prepared to undertake a play with 20 scene changes. But he was – and has achieved the scene changes by moving right away from the conventional sets and using only a minimum amount of furniture and lighting changes to depict the scenes.

Liz has enjoyed the challenge of directing this UK amateur premier of *The Graduate*, and hopes that the Bletchingley audiences will enjoy the production.

Liz says it has been a particular pleasure to welcome some new, young and talented members to the Players for this production, and very much hopes that they will stay with us.

Cast in order of appearance

Benjamin Braddock	Craig Phelan
Mr Braddock	John Tomlin
Mrs Braddock	Susan Power
Mrs Robinson	Felicity Lund
Mr Robinson	Guy Hudson
Hotel desk clerk	Robert Miller
Elaine Robinson	Rosie Young
Waiter in night	Tobi Phelan
Men in nightclub	Jeremy Lund, Sean Phelan
Nightclub dancer	Emily Viszok
Psychiatrist	Jenny Barnett
Priest	Cyril Mighall
Wedding guests	The company



craig phelan

Craig has been with Bletchingley Players for four years now, and enjoying every minute of it. But nothing has challenged him as much as this particular role. The opportunity to play such a high profile part has not only proved to be a massive learning curve but also extremely exciting as well. From his Players' debut in *On Golden Pond* as the postman, to playing Eliza Doolittle's love interest in *Pygmalion* and acting on crutches in *Haywire*, Craig has always enjoyed being involved, and naturally is relishing taking the lead in *The Graduate*.

The fact that this will be the first time ever *The Graduate* has been staged at amateur level, and Craig will be the first person to play Benjamin, is something that he is very enthusiastic about. Craig has thoroughly enjoyed working on this play and hopes to be involved in many more productions to come.

felicity lund



Felicity sometimes wishes she had kept count of the number of plays she has appeared in over the years, having started out at the tender age of four and not really stopped since.

Her formative acting years were spent as a member of CYTO (Croydon Youth Theatre Organisation) and having been seduced a number of times in her younger days (on stage, that is!), she says it is now a pleasure to be able to turn the tables at last. And who better to turn them on than Craig? Felicity has found Craig and the rest of the cast, crew and production team a delight to work with and she hopes their closeness as a company comes across to the audience.

After being Front of House Manager for the last play, and directed the one before that, she says it is good to be acting again and wonders what next year will bring?



rosie young

Rosie Young, is 15 years old and in year 11 at St-bedes School, Redhill. Her first encounter with Bletchingley Players was when she went to see their last production - *An Inspector Calls*. Shortly after, she got in touch. One thing led to another and she ended up at the audition for *The Graduate*. Her talent showed through and she was offered the part of Elaine. Rosie was delighted to accept as it had been some time since she had been involved in a drama production.

Some two years ago she played the part of a nasty schoolgirl in an amateur production of *Daisy Pulls It Off* with the Gage Players in Tadworth. This came about through the drama classes she used to attend, run by Eileen Hannah. Rosie says the classes influenced her in choosing the drama course at school for GCSE, which she is completing at the moment. She says she has really enjoyed the rehearsals and all the preparation for *The Graduate*, and is very happy to be part of such a fun-loving and welcoming team.

The Graduate as adapted for the stage by TERRY JOHNSON



john tomlin

John has appeared regularly in Players' productions, most recently in *An Inspector Calls* and *Haywire*. Among previous appearances are *On Golden Pond* and *Blithe Spirit*. John has also directed several Players' productions including *Steel Magnolias*, *The Odd Couple* (female version) and *Last of the Red Hot Lovers* by Neil Simon.



guy hudson

This is Guy's second appearance with the Players, having played Inspector Goole in *An Inspector Calls* earlier this year. He is now delighted to be playing a somewhat different character who becomes increasingly unhinged as the play goes on - eat your heart out Jack Nicholson.



tobi phelan

Tobi took drama as one of his GCSE subjects at St-bedes school in which he performed in the play *Another night on the piss* and obtained a C grade. He is looking forward to performing in *The Graduate* to gain more experience on stage. This production is a bit of a family affair with both his father, Sean and brother Craig in the cast.



jenny barnett

Jenny is another backstage stalwart, most usually making sure all the props are in place, but can occasionally be persuaded to tread the boards. In the Players' last production - *An Inspector Calls* - Jenny played Edna, the maid. She makes another brief appearance in this production... and still fits in looking after props.



cyril mighall

Cyril's stage sets have amazed Bletchingley audiences for more years than he cares to remember, but the staging of *The Graduate* has been a very different challenge. This is the second time that Liz has persuaded him to appear on stage; Cyril also played a small role in *Pygmalion*.



susan power

Susan has been a member of the Players for about 20 years during which time she has appeared in many of their productions. Latterly playing the part of Ousier in *Steel Magnolias*. Susan has also directed several plays, and when not acting or directing she helps out behind the scenes.



robert miller

Robert thoroughly enjoyed playing Gerald the cad in the recent Bletchingley Players production of *An Inspector Calls*, but recent fatherhood, means he is downsizing for this production. "Not quite so many lines, but hopefully still just as much fun," he says.



emily wiszkok

This is Emily's very first production with Bletchingley Players and she has really enjoyed the experience. Although Emily has been on stage before... singing, she has welcomed the challenge to try out her acting shoes.



jeremy lund

"Can't sing, can't dance and can't act".... at least Fred Astaire was told he could dance a little. Jeremy drifted into am-dram on his wife, Felicity's, coat tails... but, after a few years hiding behind layers of greasepaint as a dame and ugly sister, he has been cajoled into taking another cameo role - previously appearing in *Pygmalion*.



sean phelan

Sean has been involved with Bletchingley Players for many years and has been a stalwart behind the scenes. This is his second stage appearance with the Players - previously playing a footman in *Pygmalion*. He is also active in the Gatton Community Theatre.

PRODUCTION TEAM



cyril mighall



rodney bain



martin davey

Assistant lighting..... Steve Morse
 Wardrobe..... Karen Murray
 Props..... Jenny Barnett
 Sheila Mighall
 Continuity..... Eileen Shore

Backstage crew and set construction:
 John Gent, Sean Phelan, Jeremy Lund

A special thank you to Aphrodite Brides for the loan of the period wedding dress and many of the "posh frocks"!

A fish'n'chip supper will be served during the interval .

House manager **Barbara Saunders**
 Bar manager **Frank Power**
 Box office **Sue Walker**

Thank you to all our other helpers... front of house and bar staff and other behind the scenes helpers who all contribute to the success of the evening.



William IV

Country Pub and Restaurant

Little Common Lane

Bletchingley Surrey RH1 4QF

Tel: 01883 743278

Parties up to 30 catered for



Howard Cundey & Company

www.home-sale.uk

OLD FORGE, HIGH STREET, BLETCHINGLEY

01883 743400

Estate Agents and Valuers

established in Bletchingley Village since 1977

– open 7 days a week



NEXT AUCTION

23RD, 24TH & 25TH OCTOBER 2007

PREVIEW

19TH & 20TH OCTOBER 2007

Norfolk House, 80 High Street, Bletchingley, Surrey RH1 4PA

Tel: 01883 743323

www.lawrencesbletchingley.co.uk

Chairman's message

I am pleased to say that Bletchingley Players continue to thrive, and there is little about this play that I would wish to add to that already mentioned in her notes by our director for this production, Liz Tomlin.



For us to be able to continue to stage such productions, however, we do need "new blood". New members help keep us vibrant and fresh, and although we are looking to recruit more acting members, there is always a need for people interested in set construction, stage management, and other behind-the-scenes tasks as well as the many stalwarts who run the front of house operation.

We are a friendly, fun group so please think about joining us. Those interested should get in touch with our Secretary on 01883 743065.

I hope you enjoy the production.

Jeremy Lund
Chairman

Streaks Ahead

Ladies and Gentlemen's Hair Studio

92 High Street, Bletchingley

HAIR EXTENSIONS
GENT'S/CHILDREN'S CUTS
ORGANIC COLOURS AND PERMS
BRIDAL AND SPECIAL OCCASION HAIR

ALSO INCORPORATING

Pure Indulgence

for all your

BEAUTY AND HOLISTIC THERAPIES including FACIALS, MASSAGE
MANICURE, PEDICURE, REFLEXOLOGY, WAXING etc

Telephone for an appointment 01883 744467

Senior Citizen's rates - Wednesday

Prince Albert

HOME-COOKED FOOD

TRADITIONAL PUB MENU

SUNDAY ROASTS

LARGE ENCLOSED GARDEN

REAL ALES

UNDER NEW OWNERSHIP

NOW A FULLER'S HOUSE



The Graduate

Bletchingley Players,
Bletchingley Village
Hall

Reviewed by
Derrick Graham



Elaine (Rosie Young) and Benjamin (Craig Phelan)

THERE was great media interest a year or so ago, when a well-known actress appeared in the West End production of *The Graduate*, as Mrs. Robinson.

The basis of the plot is her seduction of a young man by taking all her clothes off, requiring him to satisfy her desires.

Bletchingley Players managed to be the first non-professional group to apply for performing rights to stage the play but director Liz Tomlin was of the view that the village wasn't ready for that sort of excitement and let Felicity Lund retain her undies!

This was a play of 15 scenes and 10 sets and stage director Cyril Mighall must be congratulated on achieving it on a stage with virtually no space above the level of the proscenium arch and narrow wings. If that wasn't enough he also played a priest.

Benjamin (Craig Phelan) has just graduated from college, and at 21 is full of doubts about his future. He dreads going from his bedroom to join



Benjamin (Craig Phelan) and his father (John Tomlin)

in the celebrations organised by his parents. He is wearing a wet suit given to him as a present for his success. Phelan got over perfectly the torments of growing up and facing the world as adult.

Benjamin is urged by his father to come and meet the guests so he takes off aqua gear, but still in his underpants,



Mrs Robinson (Felicity Lund) and Benjamin (Craig Phelan)

has a visit from rather drunk middle-aged Mrs Robinson.

She gets him to unzip her dress, then takes off most of her clothes and challenges him to show her he is now a man and not a shy student.

There is some quick re-dressing when her husband (Gary Hudson) arrives but the relationship develops over the next two months in various hotel rooms (Robert Miller played well the role of the hotel receptionist).

Benjamin's parents, played realistically by John Tomlin and Susan Power, put pressure on him to take out Mrs Robinson's daughter Elaine, and they go to a nightclub. But the date goes terribly wrong partly due to the attentions of a sexy dancer.

Elaine finds out he has been sleeping with her mother and they row and part. Rosie Young as Elaine gave a fine emotional performance with very mature reactions for a 15-year-old.

Elaine arranges to marry someone else, but Benjamin breaks up the wedding and Elaine realises how much he loves her and accepts him.