

Streaks Ahead

Ladies and Gentlemen Hair Studio

92 High Street, Bletchingley

HAIR EXTENSIONS
GENT'S/CHILDREN'S CUTS
ORGANIC COLOURS AND PERMS
BRIDAL AND SPECIAL OCCASION HAIR

ALSO INCORPORATING

Beauty Express

for all your

BEAUTY AND HOLISTIC THERAPIES including FACIALS, MASSAGE
MANICURE, PEDICURE, REFLEXOLOGY, WAXING etc

Telephone for an appointment 01883 744467

Senior Citizen's rates – Wednesday

Follow us on facebook

Details of productions, dates and booking details are
available on facebook - just type Bletchingley Players
in the search field



Design and origination by Silver Fox Print
Tel: 07887790220

*Bletchingley
Players*



The Cemetery Club

By Ivan Menchell



at Bletchingley Village Hall

on Thursday 13th, Friday 14th and
Saturday 15th October 2011

50p



Next auction

25th, 26th & 27th October 2011

Preview

21st & 22nd October 2011

Norfolk House, 80 High Street, Bletchingley, Surrey RH1 4PA

Tel: 01883 743323

www.lawrencesbletchingley.co.uk

Chairman's report

Theatre has moved into the 21st century and, in so doing, has brought it closer to us all. Having been unable to get tickets for the National Theatre's sell-out production of "One Man, Two Guvnors" – a play that has been receiving amazing reviews – I was instead able to view it recently at a live broadcast at the Oxted Cinema, The Screen.

This had the advantage of being cheaper than London theatre tickets, which are now exorbitant, along with the added travelling costs; the benefit of "stage" acting as opposed to "film" acting; excellent camera work, resulting in close-ups that would not be available to the theatre audience in the back half of the auditorium; and still, somehow, there was an atmosphere of being at the theatre. The cinema audience applauded along with the theatre audience, and the laughter was louder than at a showing of a comedy film. It was an interesting experience and one that I hope more theatres will enter into.

Bletchingley Players, however, has not yet reached these dizzy heights, so I do hope you continue to support us as we strive to stage two productions a year. We so enjoy seeing familiar faces coming back time and time again – it seems a bit like an extended family! It's also always exciting to welcome new faces in our audiences, who we do hope will return in the future. We may not be quite up to the standard of the London theatres, but let's face it – you wouldn't get fish and chips in their intervals!

As with all things in this current climate, costs are increasing – insurance, heating, lighting and maintenance of our rehearsal and storage hut, as well as the royalties we pay to perform the plays, and the hire of the Village Hall.

We have traditionally donated the proceeds of our raffle to charity but hope you will understand if, on this occasion, we nominate the Society as the recipient.

I do hope you enjoy our production of "The Cemetery Club" this evening.

Felicity Lund
Chairman

HomechicHome

The Christmas Reveal

Sunday 20th November
from 12 to 4.30 pm

**Please come and browse our
Christmas stock**

Tel: 07539 723 953
www.homechichome.net
96 High Street Bletchingley RH1 4PA

The Cast

Felicity started performing in school plays at the age of five, and in her teens joined the newly-formed Croydon Youth Theatre Organisation and got the opportunity to learn a variety of theatre-related skills. Felicity has directed a number of productions, including Blythe Spirit and Waiting in the Wings, and roles with Bletchingley Players have included the blind Susy in Wait Until Dark, Olive in The (Female) Odd Couple, the daughter in On Golden Pond and Mrs Robinson in The Graduate. After each one it's "Never again!" yet, somehow, here we are – again!



Felicity Lund



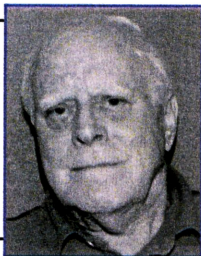
Liz Tomlin

Liz first appeared on stage aged five and has since danced and acted in more productions than she can remember. After many years with Croydon Stagers and the Miller Centre, she moved to Bletchingley 15 years ago with her husband and joined Bletchingley Players where her favourite roles have been the neurotic Florence in 'The (female) Odd Couple' and M'Lynn in 'Steel Magnolias'. Liz has also directed several productions for the Players, including 'On Golden Pond', 'Pygmalion', 'A Month of Sundays' and the UK amateur premier of 'The Graduate'.

Jackie is a regular in Bletchingley Players' productions and this is her third appearance with the Players in eighteen months. In this production she takes on an entirely different character, playing a widow who cannot get over her bereavement and just won't move on. She has been a regular with the Players over several years – taking on many varied roles.



Jackie Lucas



Dave Wastell

This is the third Bletchingley Players' production for Dave. He has now been treading the boards for at least the past 25-years and is convinced that, if he keeps practising, one day he will get it right! Dave has played all sorts of parts two of his favourites being the policeman in Dial M for Murder and the loony Lord Elrood in Post Horn Gallup. This play Dave has found challenging with the mood changes of such a well-written, bitter-sweet play.

It's been a while since Joanna last appeared in a Bletchingley Players production, and she is delighted to be back on stage again, albeit a small part. Some of her past productions include 'Blithe Spirit', 'The Female Odd Couple' and 'After September'. Joanna is a stalwart of the Society and has spent a great deal of her time organising the raffles which have raised money for local charities.



Joanna Scott

The Cemetery Club

By Ivan Menchell

Cast in order of appearance

Ida.....Felicity Lund
LucilleLiz Tomlin
Doris.....Jackie Lucas
Sam.....Dave Wastell
Mildred.....Joanna Scott

The action takes place in the Ida's living room and a cemetery

Act I

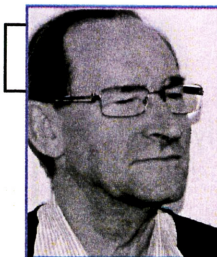
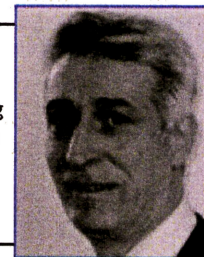
- Scene 1 - Ida's living room one morning
- Scene 2 - The Cemetery later that day
- Scene 3 - Ida's living room late that afternoon
- Scene 4 - The Cemetery - some weeks later

Act II

- Scene 1 - Ida's living room afternoon
- Scene 2 - Ida's living room late that night
- Scene 3 - Ida's living room the following morning
- Scene 4 - The Cemetery a few days later

DirectorJohn Tomlin

John first directed for Bletchingley Players in 1995, since when he has either directed or appeared in a production almost every year. "Directing on such a small stage is always a challenge, both for the director and the cast," he said, "and I dream of one day having a permanent and much bigger stage to work with. I hope you enjoy tonight's performance."



Stage Director, Cyril Mighall

Lighting and sound, Steve Morse



**Thank you to all those who have
helped with this production**

Continuity.....Pam Wastell

PropertiesJenny Barnett

Front of House ManagerSusan Power

House assistantsBarbara Saunders

.....Emma Davey

.....Christine Easterbrook

.....Eileen Shore

Bar ManagerPeter Shore

Bar assistantsJohn Lucas

.....Martin Davey

Set ConstructionJohn Gent

.....Sean Phelan

.....Jeremy Lund

LightingRodney Bain

Supper will be served at
approximately
8.45 pm.

Patrons are respectfully reminded that only drink
purchased at the bar may be
consumed on the premises.



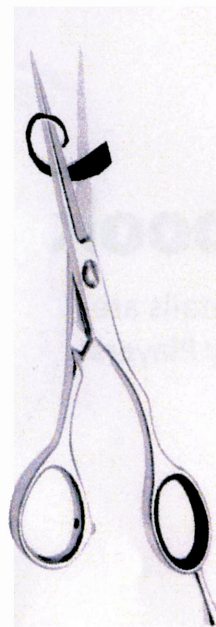
lamingtons

delicious cakes and sweet temptations

25 High Street

Bletchingley RH1 4PB

Reservations and party bookings available – 07751 405020



Charlotte Porter Hairdressing

*High Quality
Contemporary Hairdressing*

07817 274550

charlottepor@hotmail.com