

Details of our productions are available on our website:

www.bletchingleyplayers.org

or you can email: enquiries@bletchingleyplayers.org

You can also follow us on Facebook

Bletchingley Players – formerly BADS, Bletchingley Amateur Dramatic Society – have been entertaining villagers for more than 40 years – staging a wide range of productions from farce to serious drama and evenings of comedy and entertainment.

WHY NOT JOIN US?

Bletchingley Players stage two productions each year in May and October. We are always pleased to welcome new members whether they want to act, direct, help backstage, build sets or get involved with lighting, sound, props or just join in the sociability and help out front of house.

Far and wide: Surrey, Sussex and Kent.

Our geographical spread is now enormous, with offices covering all three counties

– a coverage unmatched by any other local Estate Agent.

If it's property, it's Howard Cundey



01883 743400

www.howardcundey.com



Design and origination by Silver Fox Print Tel: 07887790220

*Bletchingley
Players*
present

Two theatrical masks, one smiling and one crying, positioned to the right of the word "Players".

By NEIL SIMON

**14th, 15th and 16th May 2015
at Bletchingley Village Hall**

Programme 50 pence

Streaks Ahead

Ladies and Gentlemen's Hair Studio

92 High Street, Bletchingley

REFLEXOLOGY
HAIR EXTENSIONS
GENT'S/CHILDREN'S CUTS
ORGANIC COLOURS AND PERMS
BRIDAL AND SPECIAL OCCASION HAIR

Telephone for an appointment 01883 744467
Senior Citizen's rates – Wednesday



Next auction

9th, 10th and 11th June 2015

Viewing

5th and 6th June 2015

Norfolk House, 80 High Street, Bletchingley, Surrey RH1 4PA

Tel: 01883 743323

www.lawrencesbletchingley.co.uk

The Sunshine Boys

by Neil Simon

Cast in order of appearance

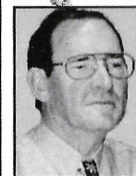
Willie Clark John Tomlin
Ben Silverman Scott Carty
Al Lewis Guy Hudson
TV Director Dave Wastell
Emma (Floor Manager) Anna Robinson
Patient Cyril Mighall
Announcer's Voice Peter Shore
Nurse Tabytha Andrews-Speed
Registered Nurse Jackie Lucas

Director Liz Tomlin

Liz has directed many times for the Players, including *The Graduate*, *On Golden Pond*, *Pygmalion* and *A Month of Sundays*. She has also played a wide variety of roles, her favourites being Florence in *The Odd Couple* and M'Lynn in *Steel Magnolias*. After being cast as a grumpy old lady and then a dotty, nervous sister in the last two plays, she has returned to directing. This is the fourth time she has directed her husband in a lead role and is also particularly delighted to be directing her eldest grandson, Scott, in the role of Ben Sherman.



Stage Director Cyril Mighall



Cyril has been a stalwart of the Players for many years. His artistic background coupled with his talent has resulted in many very clever and beautifully designed sets. No challenge is too great for him, and his inventiveness has on many occasions resulted in some extraordinary special effects and clever props. Cyril makes a rare stage appearance in this production as "The Patient".

Stage Manager Doris Parker

Having thoroughly enjoyed working on her previous productions, Doris is pleased to be involved in this latest offering – *The Sunshine Boys*. Doris is a dab hand at acquiring the props needed for various plays and has had to hunt down stuffed birds, a statue of the Virgin Mary and a cut-throat razor for previous productions. She has again come up trumps for this play – even finding a full-size skeleton.



Duncan Hollands **Technical crew** Steve Morse



Duncan's been involved with the technical side of drama for many years – in sound, lighting and backstage at many venues, starting at Croydon's Fairfield Halls and Ashcroft Theatre as well as The Miller Centre and Chaldon Amateur Dramatic Society.

Steve has been a stalwart of the Players for some years now. He too has been involved with the lighting, sound and technical side of amateur drama for some time and is also Chairman of the Chaldon Amateur Dramatic Society, having been involved in many of their productions.



HomechicHome

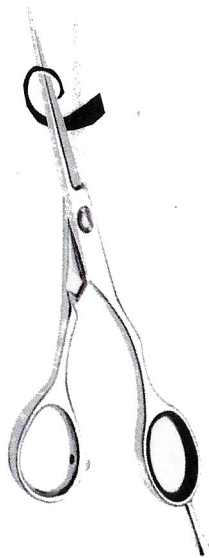
96 High Street, Bletchingley RH1 4PA

Furniture (painted, pine, classic...), antiques, pictures, jewellery, collectables and more...

Open: Mon.-Sat. 10am - 5pm
Sunday 1pm - 4pm

Tel: 07539 723 953

Email: shop@homechichome.net
Website: www.homechichome.net



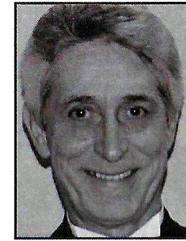
Charlotte Porter Hairdressing

High Quality
Contemporary Hairdressing

07817 274550
charlottepor@hotmail.com

THE CAST

John Tomlin



After the successful production of *Wife After Death* – John is treading the boards again as disgruntled and tetchy Willie Clark. Previous roles include Cooper in Bob Larsby's *A Month of Sundays*, Norman Thayer in *On Golden Pond* and Arthur Burling in *An Inspector Calls*. John is just as comfortable directing with *Steel Magnolias* and *The Female Odd Couple* as two of his favourites.

Guy Hudson



Guy is a regular with the Players. He's appeared in *An Inspector Calls*, played Mr. Robinson in *The Graduate* which was the UK Amateur Premier of the play, a sleazy agent in *Wife After Death*, and a villainous nephew in the melodrama *Ladies in Retirement*. Now he plays one half of a comedy duo trying to reestablish a relationship in which they have not spoken to each other for 12 years.

David Wastell



Among his many roles with other amateur groups, David has appeared in several productions for The Players, most notably in Bob Larby's *A Month of Sundays* in which he portrayed a resident in a care home who was slowly succumbing to dementia. David also served as Chairman of the Society for two years.

Anna Robinson



Anna is a newcomer to the Bletchingly Players, having come into drama at a later stage in life. Previously she was involved with Godshill Players, Hampshire, during which time she played an American actress in a compilation of Noel Coward plays, Angie in the black comedy *Natural Causes* and a participant in a Victorian spiritualistic mystery.

Scott Carty



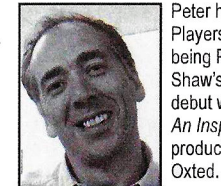
This is Scott's second appearance with the Players. He plays Ben – the young agent nephew of Willie Clark – whose patience is constantly tried by his irascible uncle. Scott gained a great deal of acting experience spending some years with Stagecoach Theatre Arts School, East Grinstead and has recently graduated with a degree in modern music from BIMS. He is in the band "Dead Circles."

Jackie Lucas



A regular performer and stalwart of Bletchingly Players, Jackie has been with the society for some years and has enjoyed a wide range of roles including parts in *A Month of Sundays*, *The Cemetery Club*, *Party Pieces* and most recently playing the complex character of Ellen Creed in the period drama *Ladies in Retirement* – a scheming and murderous companion to a retired actress.

Peter Shore

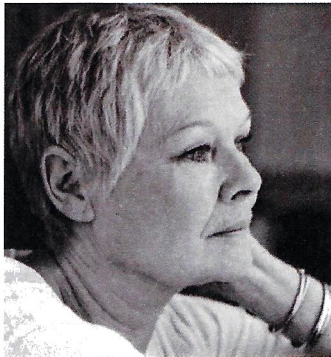


Peter has played several parts in The Players' production with his biggest role being Professor Higgins in George Bernard Shaw's *Pygmalion*. Peter had his directing debut with our production of J B Priestley's *An Inspector Calls*. Peter now acts in and produces plays at the Barn Theatre, in Oxted.

Tabytha Andrews-Speed



Tabytha studied drama, Spanish, maths and photography A-Levels at Saint Bede's Sixth Form, and intends to study Drama and Spanish at university. This is her second production with The Bletchingly Players where she plays a sexy nurse – far different from her debut role in *Ladies in Retirement* in which she played a scheming maid.



DAME JUDI DENCH
PATRON
of the Society

Dame Judi Dench has received many award nominations for her acting in theatre, film and television; her awards include eleven BAFTAs, (including the BAFTA Fellowship in 2001), seven Laurence Olivier Awards, (including the Society's Special Award) two Screen Actors Guild Awards, two Golden Globes, an Academy Award, and a Tony Award. In June 2011, she received a fellowship from the British Film Institute (BFI). We are honoured that she is our Patron.

ASSISTING WITH THIS PRODUCTION

ContinuityPam Wastell and Tamzie Holland
Front of HouseFelicity Lund and Susan Power
Advertising salesJoanna Scott
Technical support.....Rodney Bain

We purchase our suppers from
Deep Blue Fish & Chip Bar, Oxted
Tel: 01883 722666



Bletchingley
GOLF CLUB

The **number 1** draining golf course in the area

Membership available for all ages and standards

Restaurant and licensed bar open to the public 7 days a week

Function facilities to cater for all occasions

For more information contact the General Manager on 01883 744848

www.bletchingleygolf.co.uk

=====**THE**=====
BLETCHINGLEY
=====**ARMS**=====

- Great Food & Drink – Great menu full of pub classics and a monthly specials menu.
- Outside Bar – Come in dine and relax in the sunshine this summer.
- Private Dining room – Lovely private room seating 12/14 people.
- Enjoy coffee by the fire from 11 or a nice cold beer in our relaxing bar from midday.
- Parties and functions – The pub has three different areas to house your party or special meal.
- Live music – Live acoustic duos on the last Friday of every month

